

# Ellendale Towns



Colonial End Unit



Craftsman End Unit



Farmhouse End Unit

2890 SQ FT +/-  
3 Bedrooms, 3 Baths, 2 Car Garage



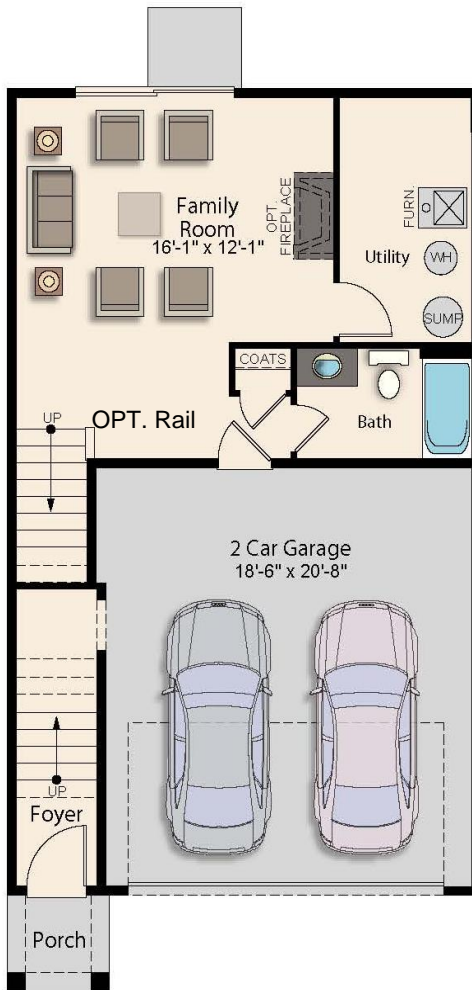
Baldwin Homes, Inc.  
410-721-0101 • [www.baldwinhomes.net](http://www.baldwinhomes.net)

Baldwin Homes, Inc. Reserves the right to make changes to features and specifications without prior notice or obligation. Every effort was made to provide accurate information at the time of publication.  
Elevations may be shown with options. 1-17-22

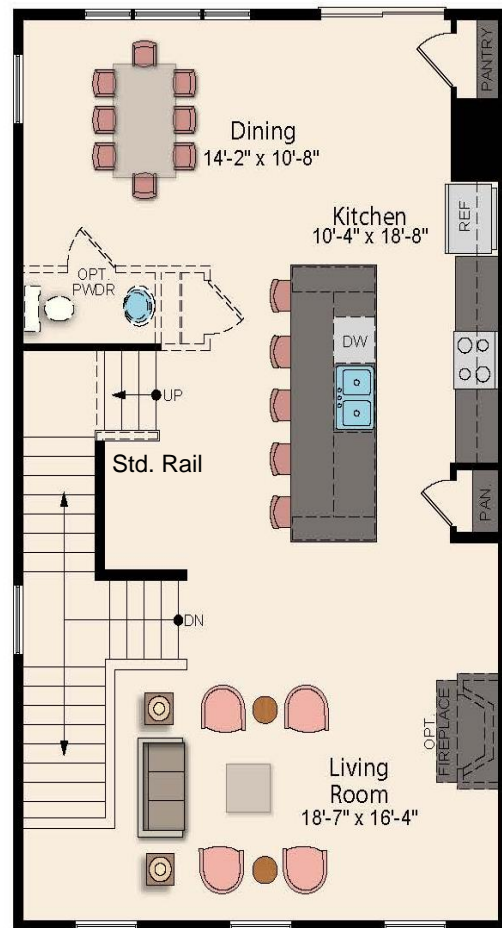
MHBR #701



# Ellendale Towns



**First Floor Plan - End Unit**



**Second Floor Plan - End Unit**

2890 SQ FT +/-

3 Bedrooms 3 Baths 2 Car Garage

Baldwin Homes, Inc.

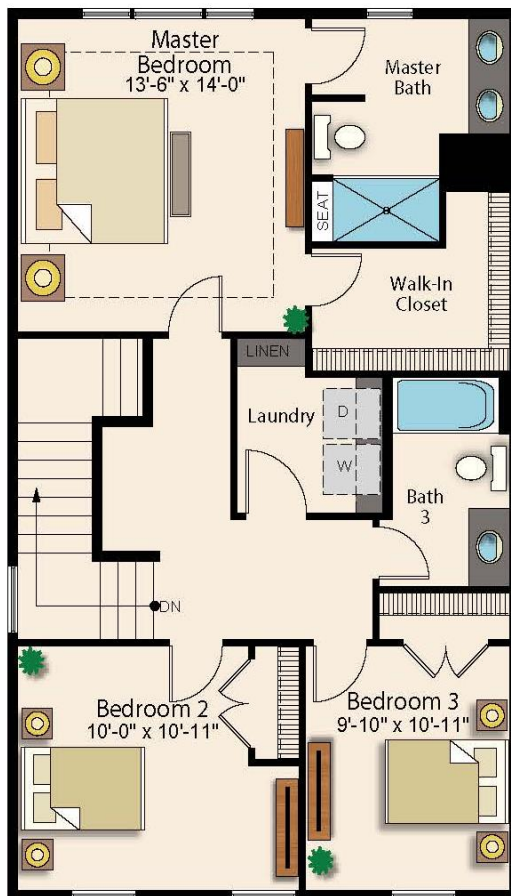
410-721-0101 • [www.baldwinhomes.net](http://www.baldwinhomes.net)

Baldwin Homes, Inc. Reserves the right to make changes to features and specifications without prior notice or obligation. Every effort was made to provide information at the time of publication.  
Elevations may be shown with options 1-17-22

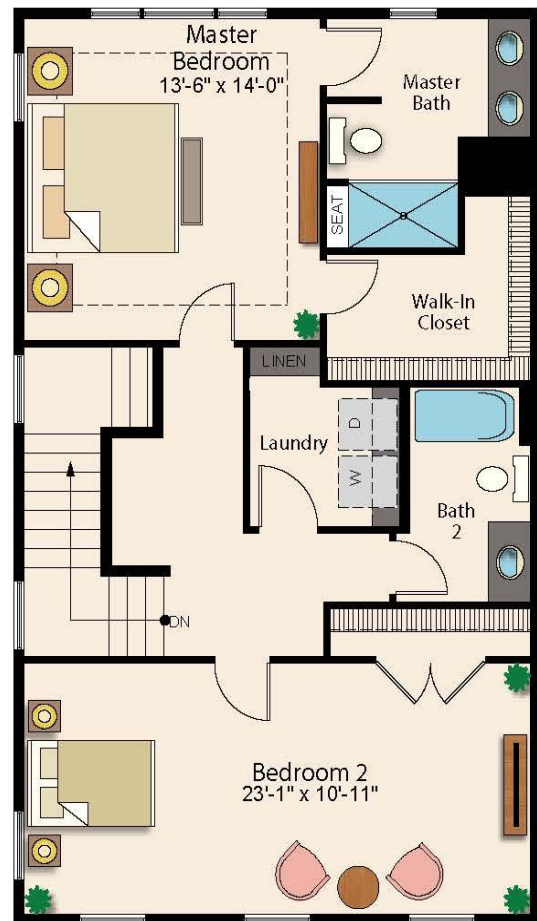




# Ellendale Towns



**Third Floor Plan - End Unit**



**Opt. Third Floor Plan - End Unit**

2890 SQ FT +/-

3 Bedrooms 3 Baths 2 Car Garage

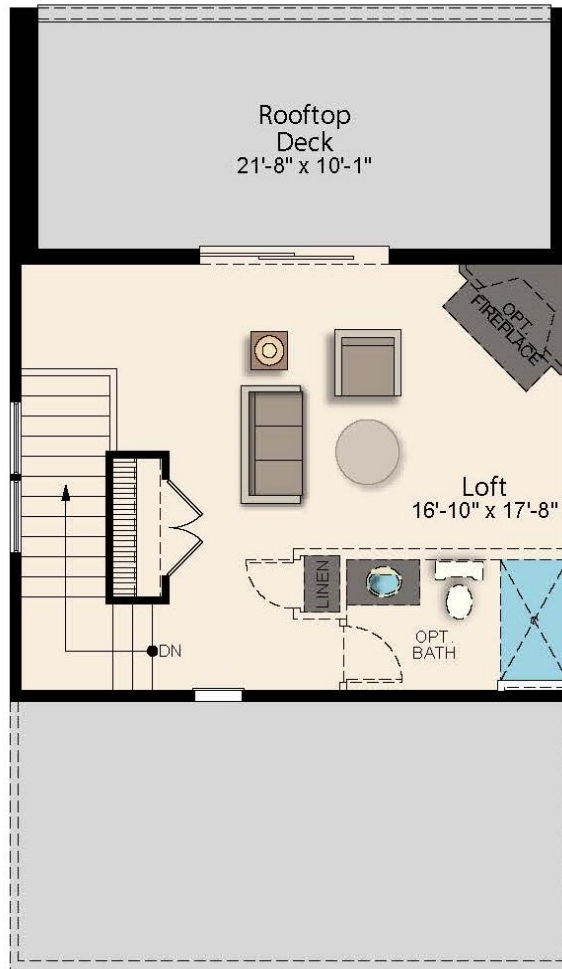
Baldwin Homes, Inc.

410-721-0101 • [www.baldwinhomes.net](http://www.baldwinhomes.net)

Baldwin Homes, Inc. Reserves the right to make changes to features and specifications without prior notice or obligation. Every effort was made to provide information at the time of publication.  
Elevations may be shown with options. 1-17-22



# Ellendale Towns



**Opt. Fourth Floor Plan - End Unit**

2890 SQ FT +/-

3 Bedrooms 3 Baths 2 Car Garage

Baldwin Homes, Inc.

410-721-0101 • [www.baldwinhomes.net](http://www.baldwinhomes.net)

Baldwin Homes, Inc. Reserves the right to make changes to features and specifications without prior notice or obligation. Every effort was made to provide information at the time of publication.  
Elevations may be shown with options. 1-17-22

