

# The Hogan



Colonial Elevation #1



Craftsman Elevation #2 (Shown with optional full porch)



Farmhouse Elevation #3 (Shown with optional full porch)

3976 SQ FT +/-

5 Bedrooms, 2.5 Baths, 2 Car Garage

Baldwin Homes, Inc.

410-721-0101 • [www.baldwinhomes.net](http://www.baldwinhomes.net)

Baldwin Homes, Inc Reserves the right to make changes to features and specifications without prior notice or obligation. Every effort was made to provide accurate information at the time of publication. Elevations may be shown with options. 6-24-20

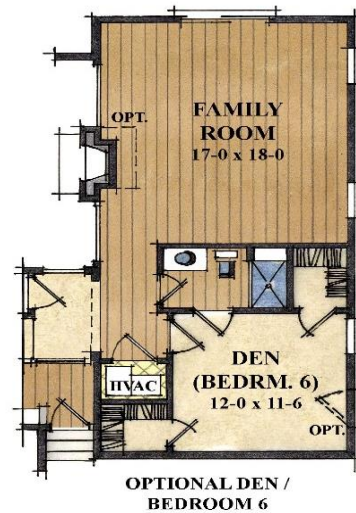
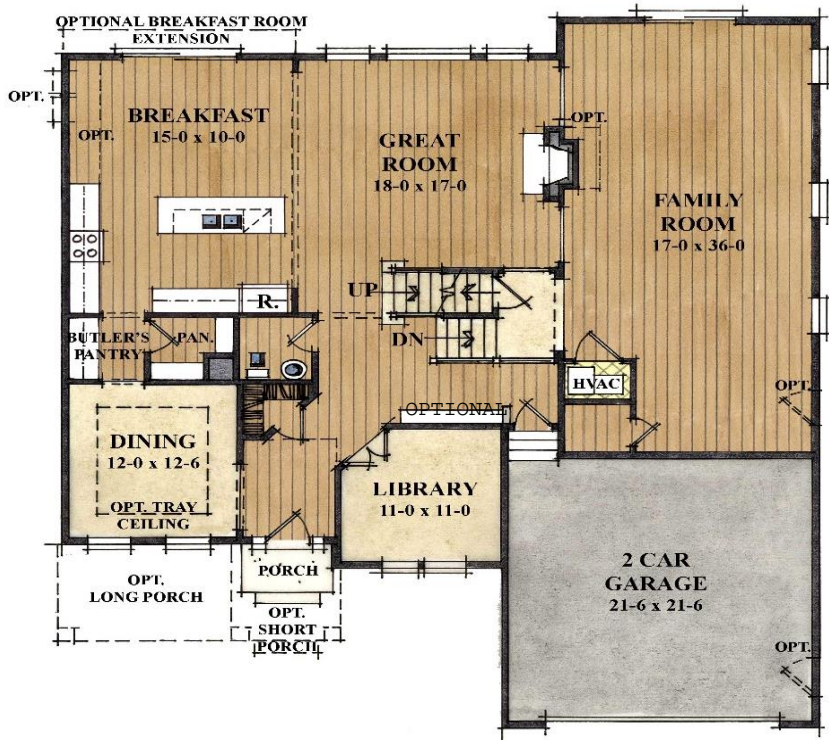


MHBR #701



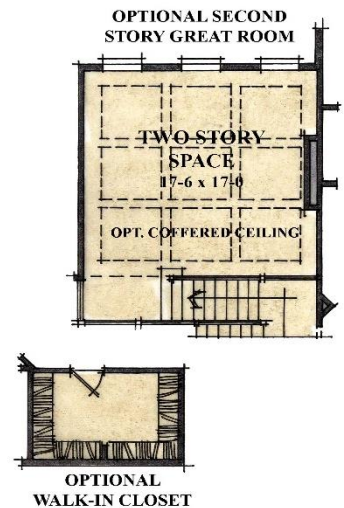
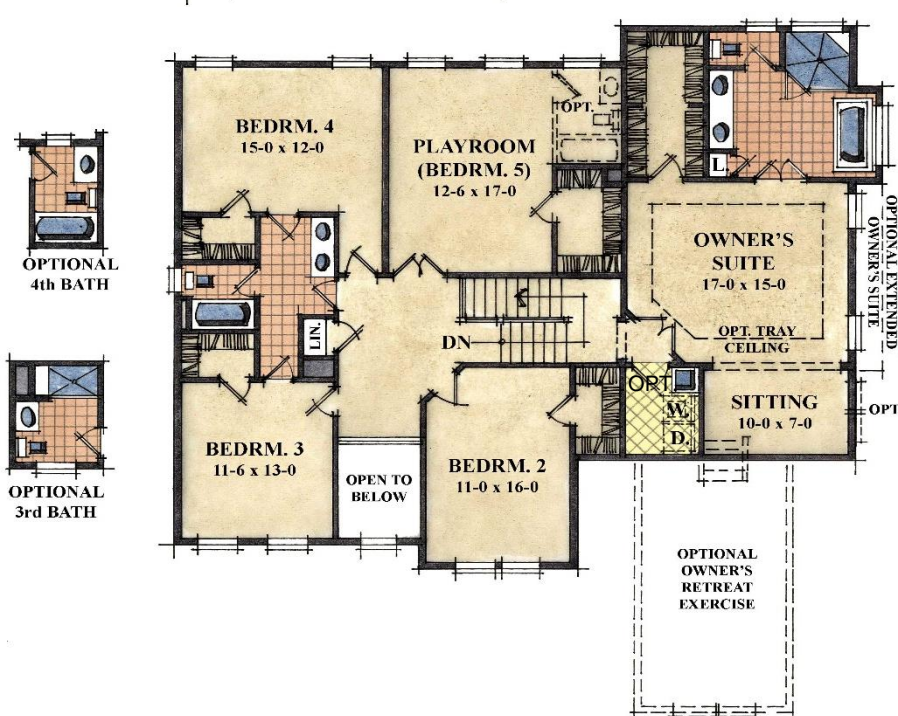
# The Hogan

3976 Sq Ft +/-



First Floor

## Second Floor



Baldwin Homes, Inc.

410-721-0101 • [www.baldwinhomes.net](http://www.baldwinhomes.net)

Baldwin Homes, Inc. Reserves the right to make changes to features and specifications without prior notice or obligation. Every effort was made to provide information at the time of publication.  
Floor Plans may be shown with options. 6-24-20



MHBR #701