

# The Emory



Elevation # 1- Colonial



Elevation # 2- Craftsman with Full Porch



Elevation # 3- Farmhouse

2278 SQ FT +/-

4 Bedrooms, 2.5 Baths, 2 Car Garage

Baldwin Homes, Inc.

410-721-0101 • [www.baldwinhomes.net](http://www.baldwinhomes.net)

Baldwin Homes, Inc Reserves the right to make changes to features and specifications without prior notice or obligation. Every effort was made to provide information at the time of publication.  
Elevations may be shown with options. 5-10-16

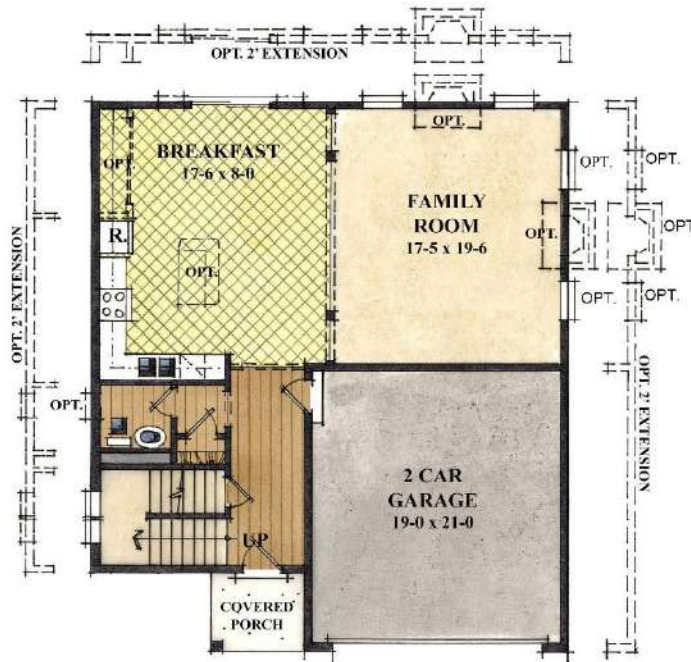




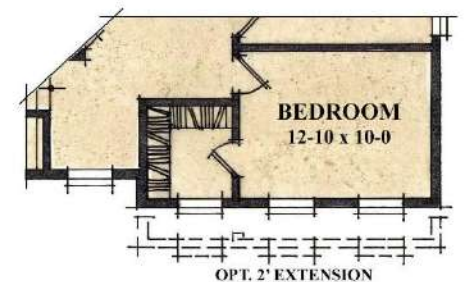
# The Emory

2278 Sq Ft +/-

First Floor



Second Floor



OPTIONAL LAYOUT w/ FIRST FLOOR LAUNDR

Baldwin Homes, Inc.

410-721-0101 • [www.baldwinhomes.net](http://www.baldwinhomes.net)

Baldwin Homes, Inc. Reserves the right to make changes to features and specifications without prior notice or obligation. Every effort was made to provide information at the time of publication.

Floor Plans may be shown with options. 09-17-18

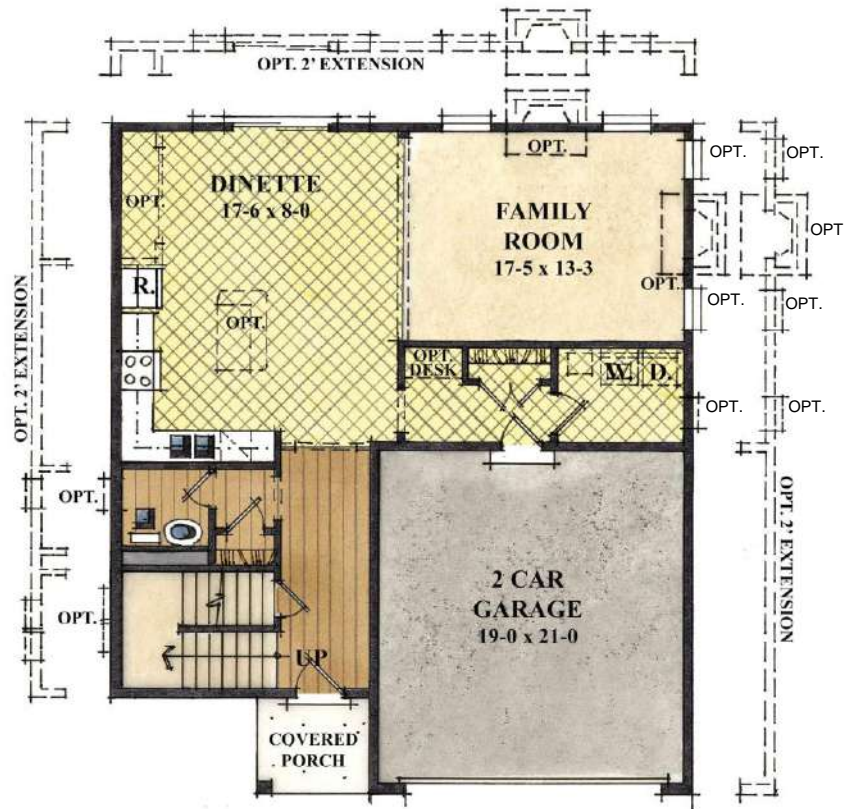


MHBR #701

# The Emory

2278 Sq Ft +/-

## Optional First Floor



## Optional Extensions



Baldwin Homes, Inc.

410-721-0101 • [www.baldwinhomes.net](http://www.baldwinhomes.net)

Baldwin Homes, Inc. Reserves the right to make changes to features and specifications without prior notice or obligation. Every effort was made to provide information at the time of publication.

Floor Plans may be shown with options. 09-17-18



MHBR #701