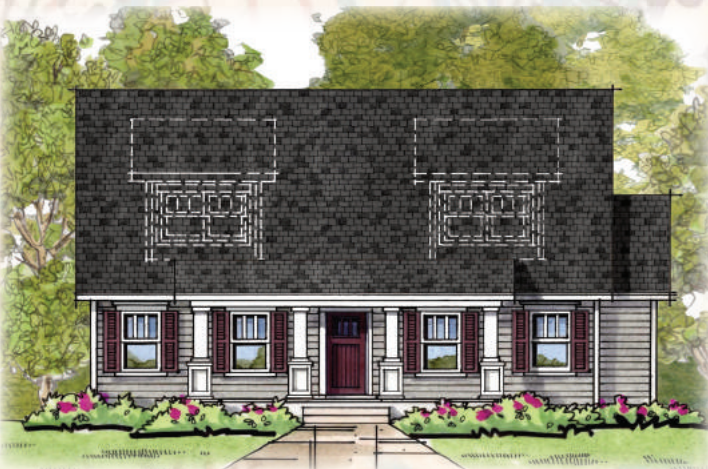


# The Milligan Cape Cod



Elevation # 1- Colonial



Elevation # 2- Craftsman



Elevation # 3- Farmhouse

2126 SQ FT +/-  
3 Bedrooms, 2.5 Baths, 2 Car Garage

Baldwin Homes, Inc.

410-721-0101 • [www.baldwinhomes.net](http://www.baldwinhomes.net)

Baldwin Homes, Inc Reserves the right to make changes to features and specifications without prior notice or obligation. Every effort was made to provide information at the time of publication.  
Elevations may be shown with options. 10-19-16





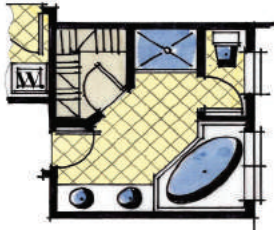
# The Milligan Cape Cod

2126 Sq Ft +/-

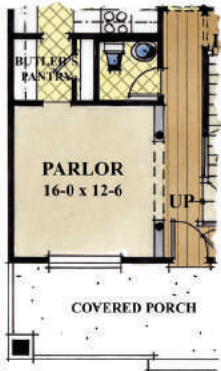
## First Floor



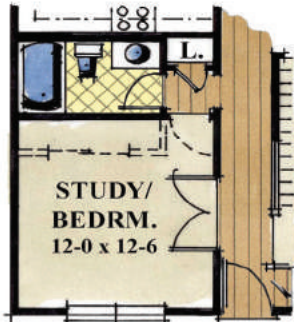
OPTIONAL FAMILY ROOM



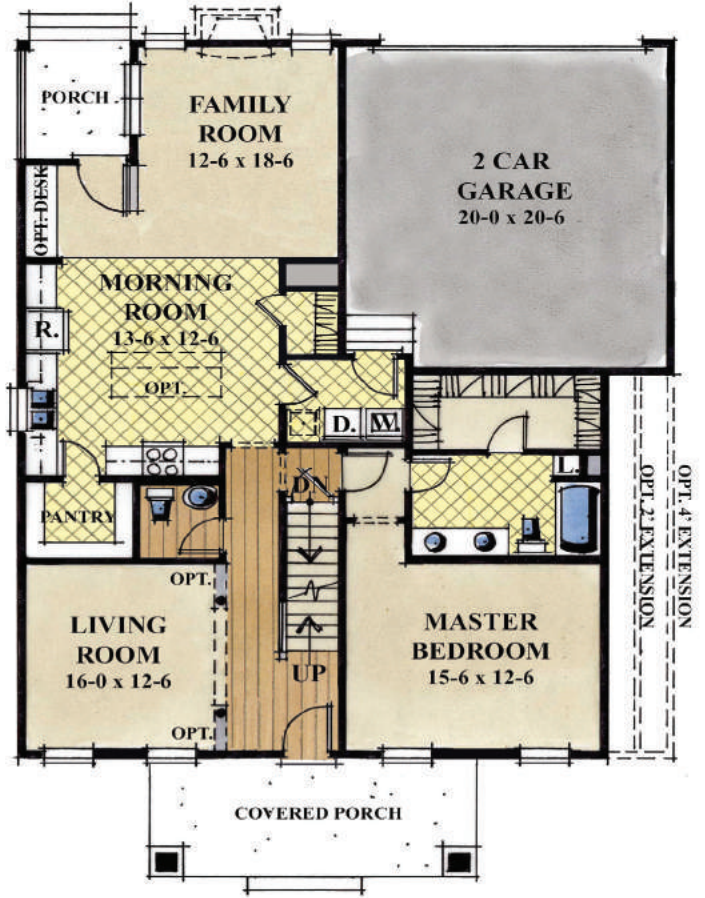
OPTIONAL MASTER BATH



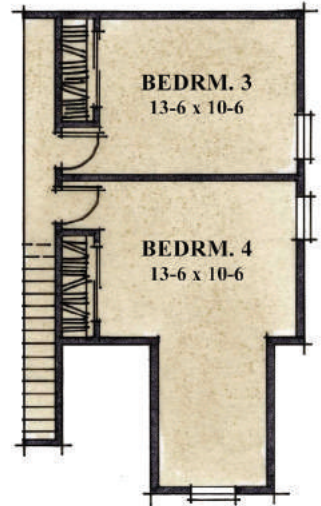
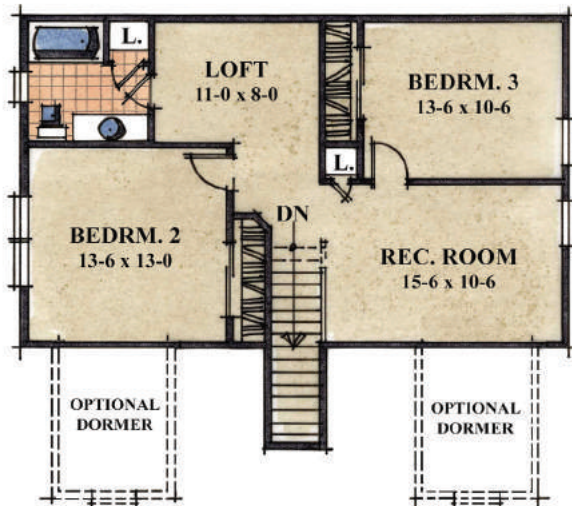
OPTIONAL BUTLER'S PANTRY



OPTIONAL STUDY/BEDROOM



## Second Floor



OPTIONAL 4th BEDROOM

Baldwin Homes, Inc.

410-721-0101 • [www.baldwinhomes.net](http://www.baldwinhomes.net)

Baldwin Homes, Inc Reserves the right to make changes to features and specifications without prior notice or obligation. Every effort was made to provide information at the time of publication.

Floor Plans may be shown with options. 5-10-16



MHBR #701